



Installing DocuWare 5.1b

Quick Reference for Update to DocuWare 5.1b

© 2008 DocuWare AG, 82110 Germering

Errors excepted, subject to change without notice.

<http://www.docuware.com>

Contents

1	General.....	3
1.1	Introduction	3
1.2	Update Requirements.....	3
1.3	Update Procedure.....	3
1.4	Copying the content of the update DVD.....	3
1.5	Update Service on Windows Vista	4
1.6	eLearning.....	4
2	Install Web Client Server.....	5
2.1	DocuWare Imaging Server: Path	5
2.2	Finish Imaging Server installation	6
2.3	Web Client Server: Path	6
2.4	Finishing installation of Web Client Server	6
2.5	Creating the first Web instance.....	7
2.5.1	Web Instance: General.....	7
2.5.2	Web Instance: Target	8
2.5.3	Web Instance: Access.....	9
2.5.4	Web Instance: File Cabinets.....	10
2.5.5	Web Instance: Technical Settings	11
2.5.6	Web Instance: Appearance.....	12
2.6	Installing Web Client Server on Windows 2003 or XP 64Bit.....	12
2.7	Installing Web Client Server on Windows Vista or 2008 64Bit.....	13

1 General

1.1 Introduction

This quick reference describes the update to DocuWare 5.1b. Only the installation of the new DocuWare Web Client Server module is described here in any detail. For more detailed information on installing and updating to DocuWare 5.1b, see the DocuWare Installation Guide.

1.2 Update Requirements

To run the update to DocuWare 5.1b you must already have an installation of DocuWare version 5.1 or 5.1a.

1.3 Update Procedure

As when installing DocuWare for the first time, you must observe the update sequence for the update as well:

1. DocuWare database (if you use it)
2. Authentication Server
3. Content Server
4. Workflow Server
5. Clients
6. All additional server modules used

Before running a DocuWare update, make sure you have the following information ready to hand:

- Database login and address
- Connection parameters to Authentication Server
- DocuWare login for the system administrator

Depending on the type of installation, this information will be displayed to you in the relevant dialogs.

You can only work with the DocuWare system if all components, i.e. Authentication Server, Content Server, Workflow Server, and the clients have the same DocuWare product version.

1.4 Copying the content of the update DVD

If you carried out the installation from the network or from a hard drive, copy the contents of the update DVD to this directory, i.e. to the existing SETUPPATH. Make sure you observe the folder structure because, since DocuWare 5.1a, the folder structure on the setup DVD differs to that in previous versions.

If the *DWSetup.exe* file is located directly in the SETUPPATH, copy the contents of the *DocuWare and Modules* subfolder from the Update DVD to the SETUPPATH.

If the *DWSetup.exe* file is located in the *DocuWare and Modules* subfolder of the SETUPPATH, overwrite the existing *DocuWare and Modules* subfolder with the new one on the Update DVD.

It is important that the existing files are overwritten with the new files.

1.5 Update Service on Windows Vista

The Update Service on Windows Vista cannot display messages because it is a service. For this reason you won't be asked whether you want to install the update now or not.

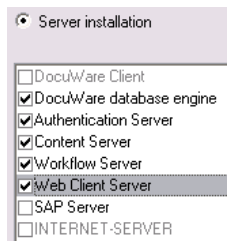
The installation runs in the background without a prompt. In some situations you will need to restart the computer. But here too no prompt is displayed asking if you want to restart now, and the computer restarts automatically.

1.6 eLearning

The eLearnings on the product DVD have not changed since DocuWare 5.1a. If you have already installed the eLearnings from the DocuWare 5.1a DVD, you can deselect the eLearning item on the start screen.



2 Install Web Client Server

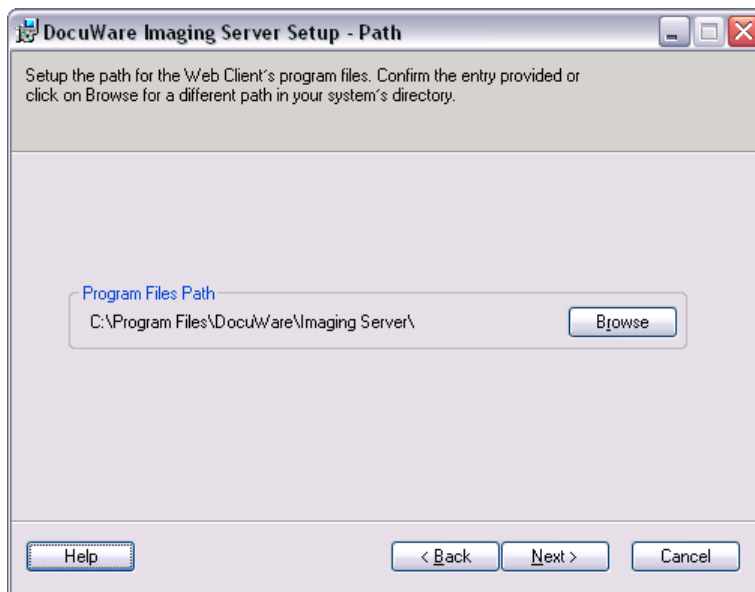


You can install the Web Client Server after you have installed Authentication Server, Content Server, and Workflow Server. The installation wizard prepares the installation of the Web Client Server.

The DocuWare Web Client setup starts by installing the AJAX Extensions 1.0 for Microsoft ASP.NET 2.0 program package. It then installs DocuWare Imaging Server. After that, DocuWare Web Client Server is installed. When the Web Client Server installation has finished, you are asked whether you now want to configure a Web instance for accessing DocuWare via a Web browser. If you answer *Yes*, the DocuWare login dialog appears. Once you have logged in, the wizard to set up the Web instance starts. Alternatively, you can answer *No* and set up a Web instance at a later date from within DocuWare Administration.

Microsoft Internet Information Services (IIS) must be running during installation of the Web Client Server.

2.1 DocuWare Imaging Server: Path



Specify in this dialog where you want Imaging Server to be installed.

Program Files Path

Here you define where you want to store the program files for Imaging Server. By default, the directory given here is `C:\Program Files\DocuWare\Imaging Server\`, which is created automatically during installation. Alternatively, click *Browse* to specify a different path.

If the path entered here is already being used for a DocuWare 4 installation, you cannot install DocuWare Imaging Server. This will provoke an error message.

Browse

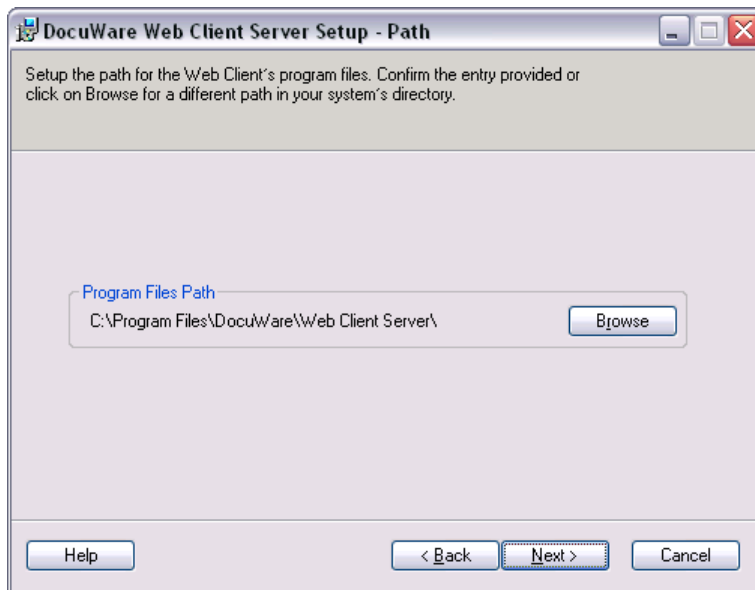
Click this button to specify a directory in which to store the Imaging Server program files. This opens the **FIND FOLDER** dialog. Select a folder in your directory tree, and confirm by clicking *OK*.

2.2 Finish Imaging Server installation

You have entered all the information required to install Imaging Server. Click *Next* to run the installation. The installation may take a few minutes. Click *Back* to return to the previous dialog if you want to check or change your entries.

After the setup program has finished copying all the data needed to install Imaging Server, the closing dialog appears. Click *Finish* to conclude the installation.

2.3 Web Client Server: Path



Specify in this dialog where you want Web Client Server to be installed.

Program Files Path

Here you define where you want the Web Client Server program files to be stored. By default, the directory given here is `C:\Program Files\DocuWare\Web Client Server\`, which is created automatically during installation. Alternatively, click *Browse* to specify a different path.

If the path shown here is already being used for a DocuWare 4 installation, you cannot install DocuWare Web Client. This will provoke an error message.

Browse

Click this button to specify a directory in which to store the Web Client Server program files. This opens the FIND FOLDER dialog. Select a folder in your directory tree, and confirm by clicking *OK*.

2.4 Finishing installation of Web Client Server

You have entered all the information required to install Web Client Server. Click *Next* to run the installation. The installation may take a few minutes. Click *Back* to return to the previous dialog if you want to check or change your entries.

After the setup program has finished copying all the data needed to install Web Client Server, the closing dialog appears. Click *Finish* to conclude the installation.

2.5 Creating the first Web instance

When the Web Client Server installation has finished, you are asked whether you now want to configure a Web instance for accessing DocuWare via a Web browser. If you answer Yes, the DocuWare login dialog appears. Once you have logged in, the wizard to set up the Web instance starts.

Among the things that you define for the instance are the login that a user can use to log in to the Web Client instance, which file cabinets belonging to the instance are always to be available and which of the Web Client functionalities can be used. For a Web Client you can also specify the settings for an integration, for example into the company Intranet. A unique URL is assigned to every web instance so that a user receives access to a web instance via the corresponding URL.

2.5.1 Web Instance: General

Create Web Instance - General

Select a name and a title for the Web instance. The title appears in the title bar of your browser when you load the Web Client. You also define the type of the instance.

Name: Web Instance Intranet

Title: DocuWare Web Client

Standard creation of instance

Customized creation of instance

Copy settings from: (none)

Custom application using Web Parts

Buttons: Help, Cancel, Back, Next

In this dialog you specify the name and a title for the web instance. You also define the type of instance.

Name

Enter here a name for the web instance, which name is used only in DocuWare administration. This allows individual instances to be identified more easily when editing the settings later on.

Title

Specify a title for the web instance here. This title appears in the title bar of the browser when the Web Client is accessed.

Standard creation of instance

Enable this option to create the web instance in a standard mode with standard settings. Standard settings are for example access using a DocuWare license (in place of a flat license) and via DocuWare ID (in place of trusted logins). The Web Client files are published as standard in a subdirectory of the IIS (Internet Information Services) standard website that is created by the system (DocuWareWebClient). If, for example, you want to work with a flat license, the customized creation of instance is recommended. In a standard instance, all file cabinets (except high security file cabinets) and their file cabinet dialogs are always available to the organization. (Availability can be reset to file cabinet level).

If you want to publish the files to a website created especially for the IIS, a user-defined configuration is required because the website cannot be changed in the table of settings.

If you choose this option, the wizard closes here. Some standard settings can be edited later in the table of settings. This option is only available if no standard web instance exists as yet.

Customized creation of instance

If you enable this option, you can define the settings for the web instance to suit your requirements in the additional dialogs for this assistant.

Copy settings from

To create a new, user-defined web instance, you can copy the settings from an existing instance. The pulldown menu lists all of the existing instances for the organization. Select an instance.

Custom application using Web Parts

The DocuWare Web Client is based on Web Parts. Enable this option if you want to use the Web Client to make available certain Web Parts/DocuWare functions in other applications, for example in Microsoft SharePoint 2007.

2.5.2 Web Instance: Target

Create Web Instance - Target

Specify the website of the IIS of the current computer on which you want the files for the Web Client to be published. Enter a name for a subdirectory in which the files will be stored. Choose a path in which to store files temporarily.

Target: Default Web Site:(All Unassigned):80

Target directory: DWWWebClient

Http address: http://DWWWEB:80/DWWWebClient

Make directory virtual

Physical directory: ...

Temp path: C:\Temp

Buttons: Help, Cancel, Back, Next

In this dialog you specify to which paths the Web Client files are to be saved.

Target

Specify here to which IIS website the files for the DocuWare Web Client are to be published. (The files were installed when the DocuWare Web Client was installed). The standard page of the Internet Information Services (IIS) with port 80 is defined as the standard target. All of the websites belonging to the Internet Information Services (IIS) of the current computer are available for selection in the pulldown menu. The files are published in a subdirectory belonging to the selected website.

The destination cannot subsequently be changed in the table of settings in DocuWare Administration.

Target directory

Specify the name of the subdirectory belonging to the selected IIS website. After you close the wizard, the system creates the directory. You can enter a name of your choice.

HTTP address

Here the HTTP address is displayed via which the web instance can be reached. The address comprises the server name of the current computer and the target directory.

Make directory virtual

Enable this option if you want to store the content of this web instance to a directory other than the master or base directory. The content published on websites is normally located in a base or master directory, for example

C:\inetpub\wwwroot\). You can store the content for the web instance somewhere else. To do so, enable this option and then enter the path below.

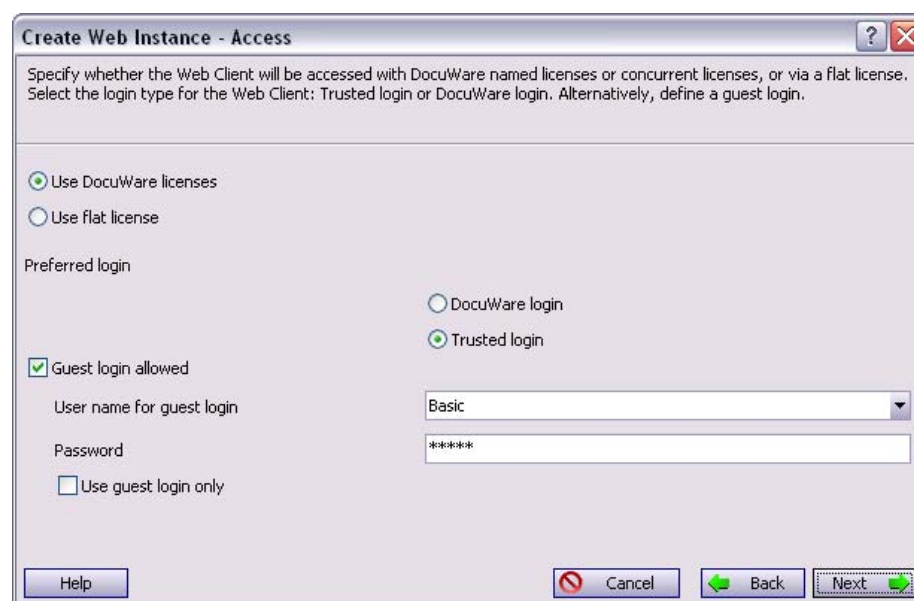
Physical directory

Specify the directory to which you wish to save the content of this web instance. This must be a local directory on the current computer. This option is only available if you enabled Virtual Path. Please ensure that the directory is empty and that no files are stored there.

Temp path

Select here a path for the temporary storage of documents (compulsory). This must be a local path on the computer on which the DocuWare Administration or the IIS runs. The *DWWeb* folder is created in this path.

2.5.3 Web Instance: Access



In this dialog you specify which licenses and with which login the web instance can be accessed.

Use DocuWare licenses

If you enable this option, a DocuWare license is required to access the Web Client. In this case the user will require a named or concurrent license to be able to access the Web Client. (The user can use this license to access the DocuWare Windows client at the same time). A DocuWare license allows read and write access.

Use flat license

If this option is enabled, the Web Client can only be accessed with a flat license. One flat license can be used for each web instance. A flat license is sold separately and independently from the DocuWare licenses and is valid for one web instance in each case. The number of users that can access a web instance using a flat license is unlimited. However only read-only access is possible. This option is available only if at least one flat license is installed for the organization.

Preferred Login

Here you define whether, when the web instance is accessed, the page is accessed that allows a trusted login. Alternatively, the page is called up that makes a DocuWare login necessary. In the case of a standard trusted login, you must ensure that the valid network ID is entered for the users in DocuWare User Administration. Please also note that the behavior with a trusted login in Internet Explorer differs to that when using Firefox. In the case of a trusted login, the user is always automatically transferred to the web instance if he or she uses the Internet Explorer. However the standard setting for Firefox is to first ask for the network ID. If users are to be directly transferred to the Web Client with Firefox, they need to make certain settings in Firefox. Further information can be found in the Technical Reference (Tecdoc).

Guest login allowed

Enable this option if you want to allow guest login. Guest login is recommended where guests/visitors are to be granted access to DocuWare. Alternatively, you might want guest login to be available in order to integrate the web instance into other applications. Guest logins do not require entry of a user name and password; both are specified here as described below.

The rights available to a user via guest login depend on what rights the DocuWare user has whom you define here for the guest login. Look carefully at what options this DocuWare user has. As a rule, read rights are sufficient for guest login.

User name for guest login

Select an existing DocuWare user to be used for the guest access.

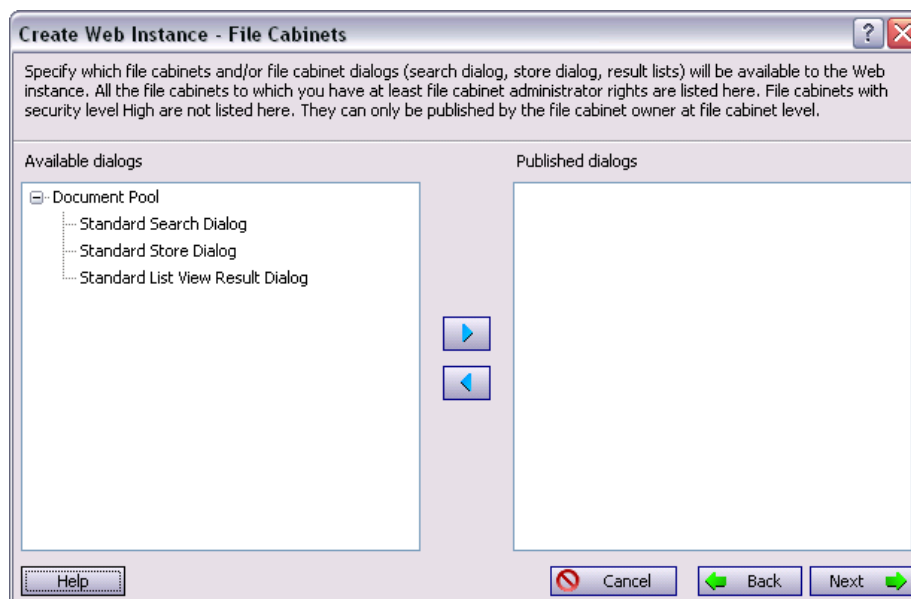
Password

Enter the password for the selected DocuWare user.

Use guest login only

Activate this option if this web instance is to be accessible solely via guest login. There is no login dialog for logins to a web instance defined solely as a guest login. The system logs onto DocuWare directly with the user entered here.

2.5.4 Web Instance: File Cabinets



Here you specify which file cabinets and/or file cabinet dialogs (search dialog, store dialog, result lists, task lists) should always be available in the web instance. The dialogs that a specific Web Client user can actually use does not just depend on the selection made here. For access to individual dialogs, the file cabinet rights of the logged-on user are also decisive. Here all file cabinets are listed to which you have file cabinet administrator rights or higher.

File cabinets assigned here to the web instance - and/or published for the instance - receive an entry at file *cabinet/general level* in DocuWare Administration, under the *Web Options* category.

To assign file cabinets, you must have file cabinet administrator rights or higher. File cabinets with security level *High* are not listed here. Such file cabinets can only be published by the file cabinet owner at file cabinet level for the web instance. Not all result lists in the tree view are available here either; you can only select the result lists and task lists to display the results.

Available Dialogs

All available file cabinets and associated dialogs are listed in this window.

Right arrow

Click the Right arrow to assign the desired elements. To do this, select the element in the left-hand window. Click the Right arrow to copy the selected element into the right-hand window.

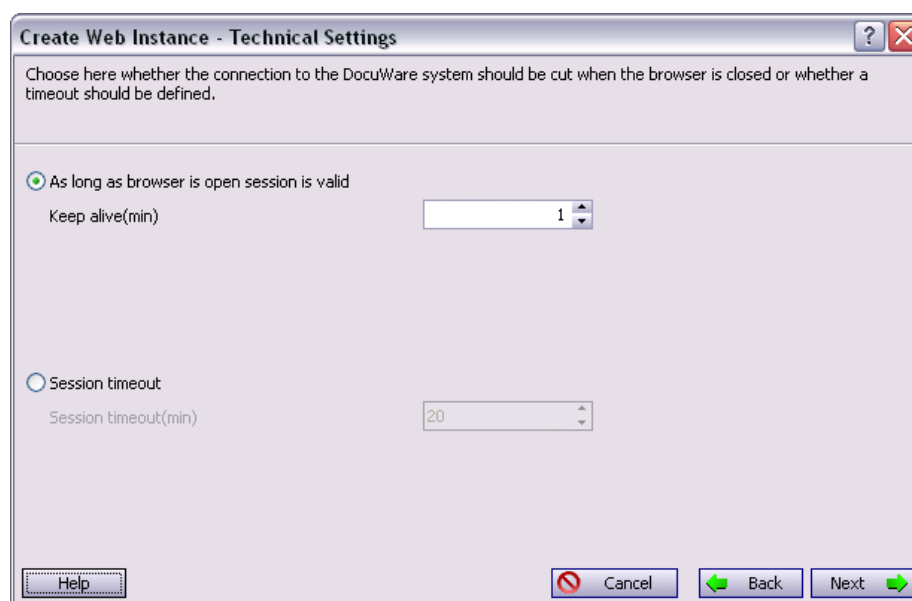
Left arrow

Click the *Left arrow* to remove selected elements from the list in the right-hand window. These elements are then no longer assigned. They appear once again in the window on the left.

Published Dialogs

In this window appear those file cabinets and file cabinet dialogs that are always available to the web instance.

2.5.5 Web Instance: Technical Settings



In this dialog you specify when the connection of the web instance to the DocuWare system is to terminate.

As long as browser is open session is valid

Enable this option if the connection to the DocuWare system is cancelled only if the browser in which the web instance runs, is closed. If this option is enabled, the connection remains for as long as the browser is open. The license with which the user is logged on is required for the entire period. This option can be sensible if, for a long period, a user repeatedly requires data from DocuWare whilst working with another application. The user then does not have to log in again each time they access DocuWare.

Keep alive (min)

Specify here the interval at which the browser (in which the web instance is opened) pings the server. This ping signals to the server that the browser is active and that the connection to the DocuWare system is to be maintained. If the user closes the browser, the connection is broken following the interval specified here. The minimum value for the time interval is one minute and the maximum value is 2 hours (120 minutes). This option is only available if "As long as browser is open session is valid" is selected.

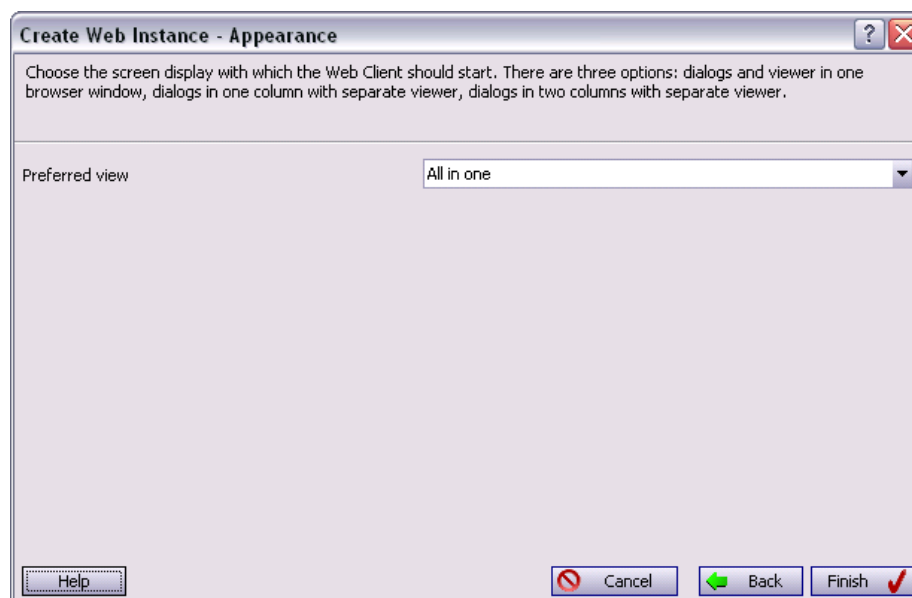
Session timeout

If this option is enabled, the connection to the web instance is broken if, after a certain period, no further query is sent to the server. The connection to the DocuWare system is lost after the period has elapsed, even if the browser with the web instance remains open. This option can be sensible if the users mainly send individual queries to DocuWare. Should you forget to close the browser, the session is closed and the license is free again.

Session timeout (min)

Define the interval after which the session will end if no query is sent to the server. The minimum interval is one minute, the maximum 2 hours (120 minutes). This option is only available if session-timeout is enabled.

2.5.6 Web Instance: Appearance



In this dialog you define the preferred appearance for the web instance.

Preferred view

The DocuWare Web Client can be opened in three different views. Here you specify with which of the three views this web instance is to be accessed. The following views are available:

- *View Work area and Viewer in one window (All in one):* This means that the favorites menu and the file cabinet dialogs appear in the left-hand side of the browser window and the Viewer on the right.
- *View Single-column work area with separate Viewer (One column with separate Viewer):* The Viewer is displayed in a separate window, the result list in the right-hand part of the work area. This view can be recommended if you work a lot with result lists - for example as task lists - and you want to make your result list wider.
- *View Two-column work area with separate Viewer (Two columns with separate Viewer):* The Viewer is displayed in a separate window. All dialogs and the result list are displayed in a single column across the entire width of the browser window. This view is recommended if you want to increase the size of your Viewer vertically and position it as required.

2.6 Installing Web Client Server on Windows 2003 or XP 64Bit

Web Client Servers cannot be installed by the setup on a Windows 2003 or XP 64-bit system. Because Web Client Servers run in 32-bit mode, Microsoft IIS must be configured for 32-bit.

WARNING: IIS 64-bit applications cannot be used or installed after this setting has been changed on the computer.

Configuring IIS for 32-bit mode:

Enter the following command line in the console window:

```
cscript %SYSTEMDRIVE%\inetpub\adminscripts\adsutil.vbs SET W3SVC/AppPools/Enable32bitAppOnWin64 1
```

Then you need to register .NET in IIS. You do this in the console window with the following command:

```
%SYSTEMROOT%\Microsoft.NET\Framework\v2.0.40607\aspnet_regiis.exe -i
```

IMPORTANT: The v2.0.40607 directory name in the above path changes according to which .NET release is installed. Check the name of this directory on your computer and adapt it in the command accordingly.

2.7 Installing Web Client Server on Windows Vista or 2008 64Bit

Both operating systems have a so-called "application pool". In the properties of this pool you can choose whether 32-bit is supported or not. The application pool of Web Client Server must be set to 32-bit here. On these operating systems you do not need to run the command lines described above.

At the moment the installation cannot be executed accurately. A hotfix will be available soon.